



MANUFACTURING, DESIGN AND INSTALLATION

# PAINTING SYSTEMS



**VAZDELAR**  
SISTEMAS DE PINTURA



# ABOUT US



We are a company specialized in paint systems and we offer:

- Design
- Fabrication
- Installation
- Turn Key Projects
- After sales service
- Integration
- Retrofits
- Process optimization
- Maintenance Services



**VAZDELAR**  
SISTEMAS DE PINTURA

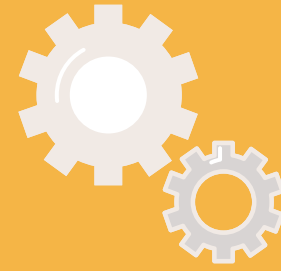


# ADVANTAGES



- Honesty
- Deep knowledge of paint process and system
- Wide experience in Turn Key projects
- Very competitive costs due to actual joint ventures
- Local service
- Fastest delivery time
- Team work with customer
- Punctual start and delivery dates
- Direct distribution in Mexico and Latin America paint subsystems
- Process optimization
- Top Engineering
- Experience

# OUR SPECIALITY



- Electrocoating (e-coat, KTL)
- Powder Coating
- Top Coat (Plastic or metal substrate)
- \*Autophoretic®
- Waste Water Treatment Systems
- Washers
- Conveyors
- Air handling
- Ovens
- Water Purification System (zero discharge)



**VAZDELAR**  
SISTEMAS DE PINTURA



# ¿WHY HIRING **VAZDELAR**?



- Best Mexican Paint system manufacturer
- Full responsibility in all the projects
- High reputation on the market
- Very agile, flexible and versatile company
- Commitment with customer needs in delivery time
- Perfect knowledge of reliable and skilled contractors
- Local service
- American and local equipment
- We always deliver on time
- **Honesty**



# CUSTOMERS

**ASMO**

**HITACHI**

**CNH**  
INDUSTRIAL



**Bright Finishing**  
E-coat & Plating Processes



**Summit Polymers**

**CATERPILLAR**<sup>®</sup>



**Metalsa**



**HONDA**

**MAXION**  
INMAGUSA - MEXICO



**AUTO•TECH**  
PRODUCTION SERVICES, INC.

**mabe**

**POLARIS**<sup>®</sup>



**ACCURIDE**<sup>™</sup>

**Gestamp**

**Jimssa**  
GROUP

**MAGNA**

**Johnson**  
**Controls**



A Brand of CNH Industrial



**NAVISTAR**

**Schneider**  
Electric

**Rassini**

**YORUZU**

**BISON**

# WE REPRESENT:

- ControlledPower (DC rectifiers)
- Polifluid (Powder Coating Saving Systems Up To 15%)
- Nitrotherm (Liquid Paint Saving Systems Up To 30%)
- ACR (Thin anode cells)
- Synder (UF systems)
- Parker (UF Elements and anodes)
- Richards Wilcox (Conveyors)
- DryQuick (IR Ovens)
- Rite (Water heaters and Boilers)
- Andreae (Inertial paint filters)
- Rotoplas (Polyethylene holding tanks)





COMPLETE  
SYSTEMS



**VAZDELAR**  
SISTEMAS DE PINTURA

COMPLETE  
SYSTEMS







# PAINT SYSTEMS



**VAZDELAR**  
SISTEMAS DE PINTURA

## TOP COAT PAINT SYSTEMS (METAL)







**VAZDELAR**  
SISTEMAS DE PINTURA



# PAINT SAVING SYSTEMS



**POLIFLUID**

UP TO 15%



Made in Italy  
**POLIFLUID**  
ELECTROSTATIC POWDER COATING SYSTEM

The image shows two yellow industrial units for electrostatic powder coating. Each unit has a control panel with a screen and buttons. The background is a blurred industrial environment with machinery.



**NITROTHERM SPRAY**

UP TO 30%



Made in Italy  
**NITROTHERM SPRAY**  
NTS | 20 PK standard

The image shows three white industrial units for electrostatic powder coating. Each unit has a control panel with multiple gauges, a red emergency stop button, and various control knobs. The background is a blurred industrial environment.



**TOP COAT  
ELECTROSTATIC**



**VAZDELAR**  
SISTEMAS DE PINTURA

**TOP COAT  
ELECTROSTATIC**





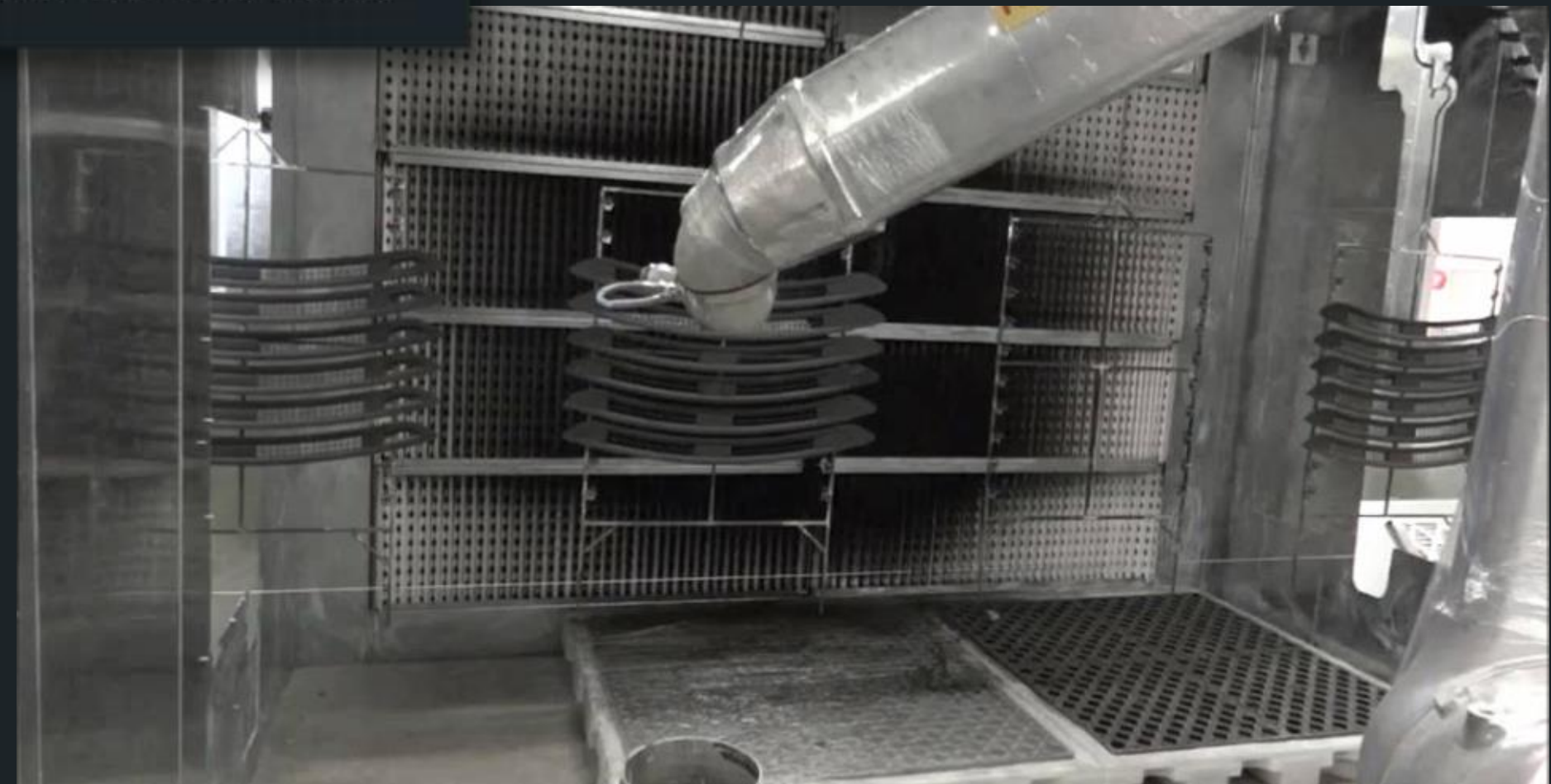


# ROBOTIC PAINT SYSTEMS (PLASTIC)



**VAZDELAR**  
SISTEMAS DE PINTURA

# ROBOTIC PAINT SYSTEMS (PLASTIC)





# FLAME TREATMENT FOR PLASTIC



**VAZDELAR**  
SISTEMAS DE PINTURA





# FLAME TREATMENT FOR PLASTIC



**VAZDELAR**  
SISTEMAS DE PINTURA



# E-COAT PAINT SYSTEMS (BATCH)



**VAZDELAR**  
SISTEMAS DE PINTURA

# E-COAT UF SYSTEM





# E-COAT PAINTING SYSTEM SYSTEM (CONTINUOUS)



**VAZDELAR**  
SISTEMAS DE PINTURA



**CHRYSLER**

Operator View Screen

System Fault Screen

AACD Setup Screen

Timer Setup Screen

VCL Setup Screen

Amp Hour and Pump Control Screen

Rect 1 Output Trending  
Rect 2 Output Trending  
Rect 3 Output Trending  
Rect 4 Output Trending  
Rect 5 Output Trending  
Rect 6 Output Trending  
Rect 7 Output Trending  
Rect 8 Output Trending  
Rect 9 Output Trending  
Rect 10 Output Trending  
Rect 11 Output Trending  
Rect 12 Output Trending

Mode Selection Screen

Alarm History Screen



# E-COAT PAINTING SYSTEM (CONTINUOS)



**VAZDELAR**  
SISTEMAS DE PINTURA



# E-COAT PAINT SYSTEMS



**VAZDELAR**  
SISTEMAS DE PINTURA



# TOP COAT



**VAZDELAR**  
SISTEMAS DE PINTURA







# SUB-SYSTEMS INDIVIDUAL EQUIPMENTS



**VAZDELAR**  
SISTEMAS DE PINTURA



BATCH

WASHERS



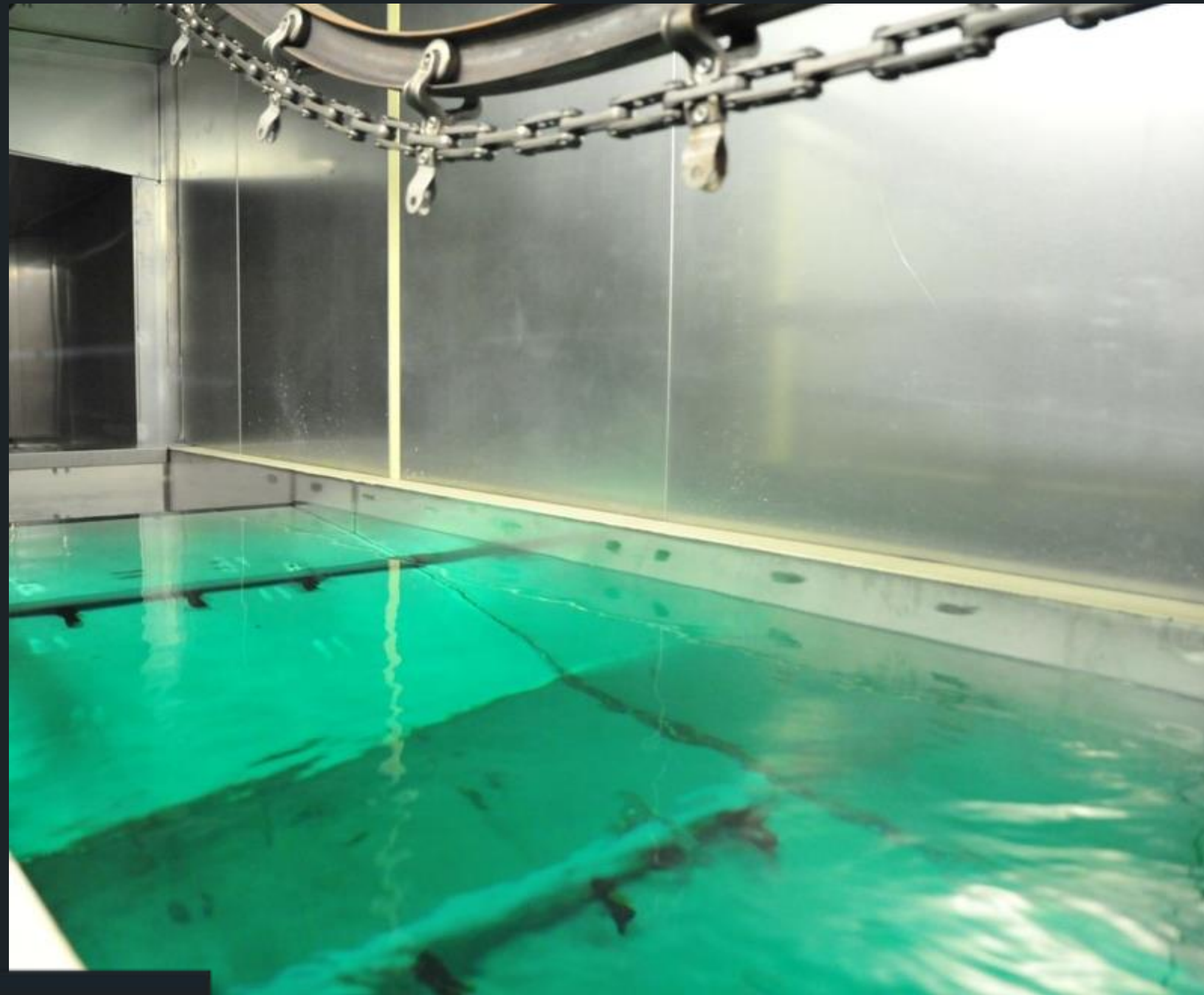
**VAZDELAR**  
SISTEMAS DE PINTURA



CONTINUOS



# WASHERS



**VAZDELAR**  
SISTEMAS DE PINTURA





**VAZDELAR**  
SISTEMAS DE PINTURA

WASHERS



# DRY OFF OVEN



**VAZDELAR**  
SISTEMAS DE PINTURA



# CURING OVEN



**VAZDELAR**  
SISTEMAS DE PINTURA



# HEATING SYSTEMS



**VAZDELAR**  
SISTEMAS DE PINTURA





# INSPECTION ZONE



**VAZDELAR**  
SISTEMAS DE PINTURA





# WATER TEST BOOTH



**VAZDELAR**  
SISTEMAS DE PINTURA



# WATER TEST BOOTH



**VAZDELAR**  
SISTEMAS DE PINTURA



# LIFTS AND TRANSFERS



**VAZDELAR**  
SISTEMAS DE PINTURA



# UF SYSTEMS AND RO



**VAZDELAR**  
SISTEMAS DE PINTURA



# CONVEYORS



**VAZDELAR**  
SISTEMAS DE PINTURA



# IR OVENS



**VAZDELAR**  
SISTEMAS DE PINTURA



# RECTIFIERS



**VAZDELAR**  
SISTEMAS DE PINTURA



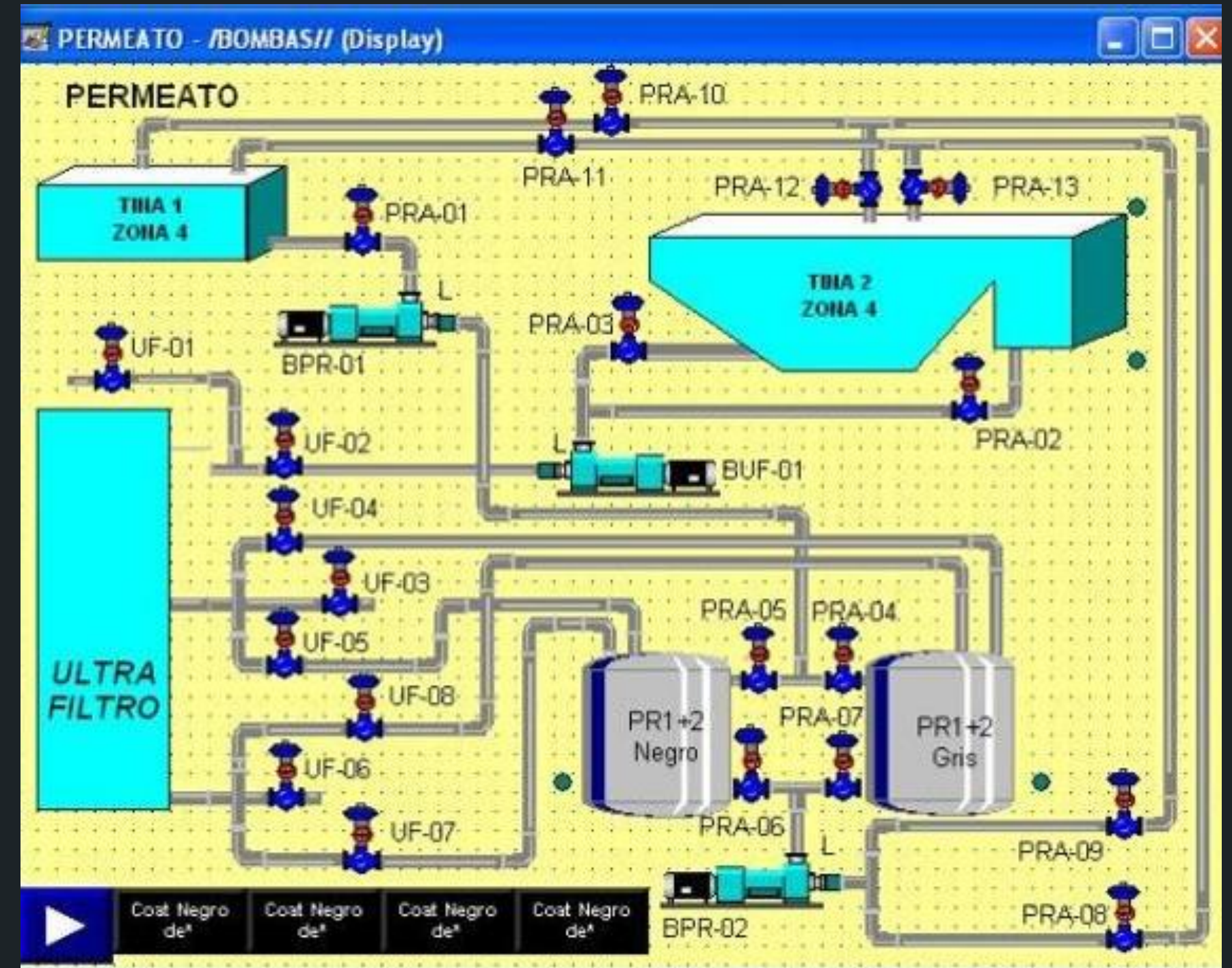
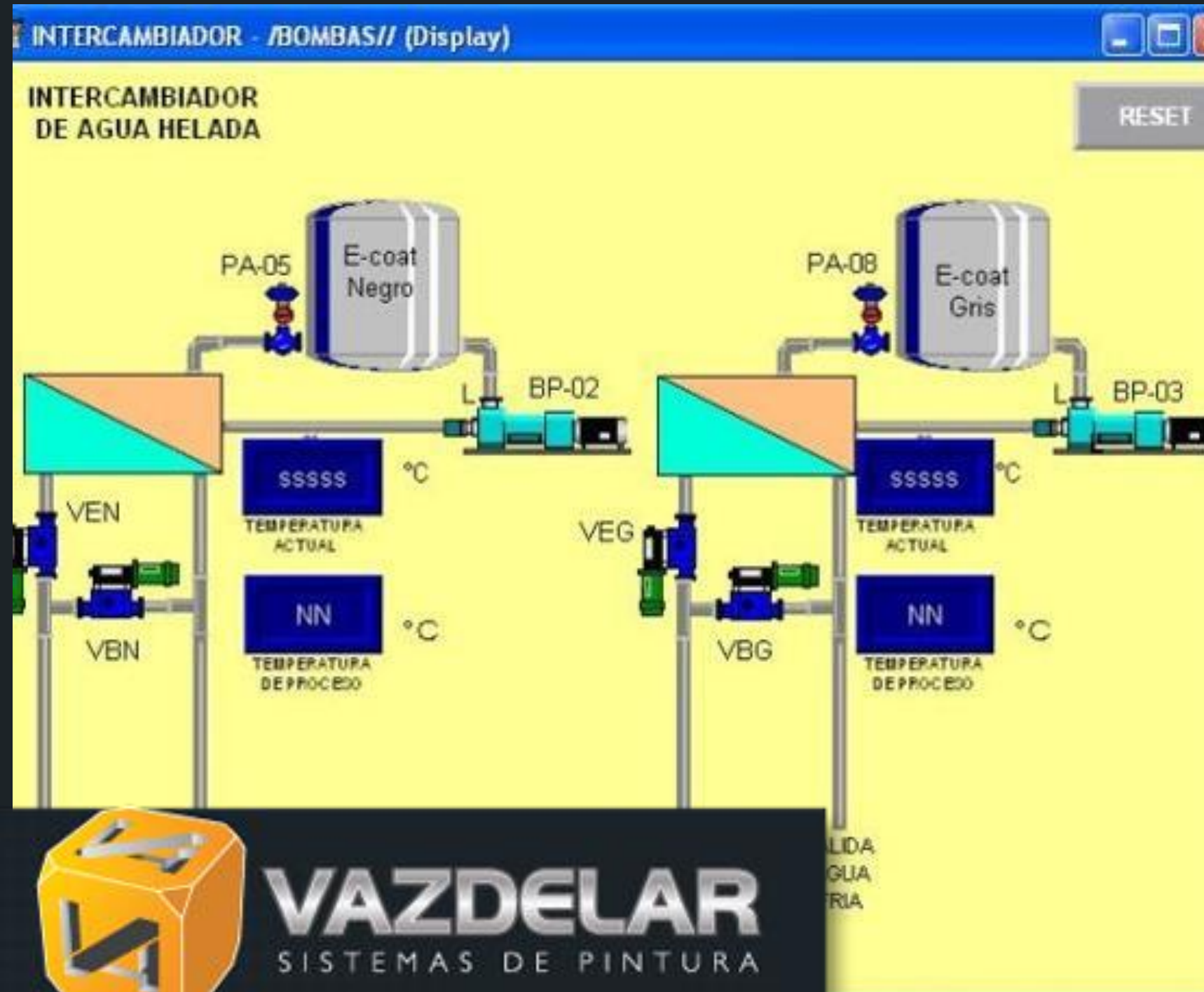
# BURN OFF OVENS



**VAZDELAR**  
SISTEMAS DE PINTURA



# ELECTRICAL INSTALLATION AND AUTOMATION



**VAZDELAR**  
SISTEMAS DE PINTURA



# PAINT SHOWS

**FABTECH**  
MÉXICO

**COATech**

**MAYO 2-4**  
**CINTERMEX,**  
**MONTERREY, MX.**  
EVENTO LÍDER EN MÉXICO EN:

SOLDADURA METALFORMADO FABRICACIÓN ACABADOS

**VAZDELAR**  
SISTEMAS DE PINTURA

Visítanos en el stand:  
**2335**

Regístrate con la clave **EEX17**

Estacionamiento Gratuito  
para visitantes

[www.fabtechmexico.com](http://www.fabtechmexico.com)



**VAZDELAR**  
SISTEMAS DE PINTURA



Agradecemos su visita a  
nuestro stand en



Esperamos volvernos a encontrar  
pronto y colaborar juntos.

Un saludo de parte de todo el equipo



Calle Chietla 924, La Paz, Puebla,  
México.

Email: [vazdelar@vazdelar.com.mx](mailto:vazdelar@vazdelar.com.mx)  
Tel: +52 (222) 298-42-17

[www.vazdelar.com.mx](http://www.vazdelar.com.mx)

**SFM2017**  
SURFACE FINISHING MEXICO

**13-15 de marzo de 2017**





# PAINT SHOWS



**VAZDELAR**  
SISTEMAS DE PINTURA



# TECHNICAL SESSION AMS



ASOCIACIÓN MEXICANA  
DE INDUSTRIALES DE ACABADOS SUPERFICIALES

**SESIÓN TÉCNICA PUEBLA**  
*TECHNICAL SESSION PUEBLA*

**Sistemas de Pintura Líquida**  
*Liquid Paint Systems*

Jueves 25 de MAYO	Thursday, MAY 25
8:30 AM	8:30 AM
Sede: UDLAP, Puebla	Venue: UDLAP, Puebla
Edificio y Auditorio	Health Sciences Building
Ciencias de la Salud	and Auditorium

Ex-Hacienda Santa Catarina Máty S/N. 72810  
San Andrés Cholula, Pue

REGÍSTRATE AHORA / REGISTER NOW  
[www.amas.org](http://www.amas.org)

PATROCINADORES



**VAZDELAR**  
SISTEMAS DE PINTURA







**CALLE CHIETLA 924 COL. LA PAZ.  
PUEBLA, PUE.**

**Tel. 01 (222) 298 4217  
WWW.VAZDELAR.COM.MX**



**VAZDELAR**  
SISTEMAS DE PINTURA